

# Guida per l'installazione di Youneed Desktop su Microsoft Windows

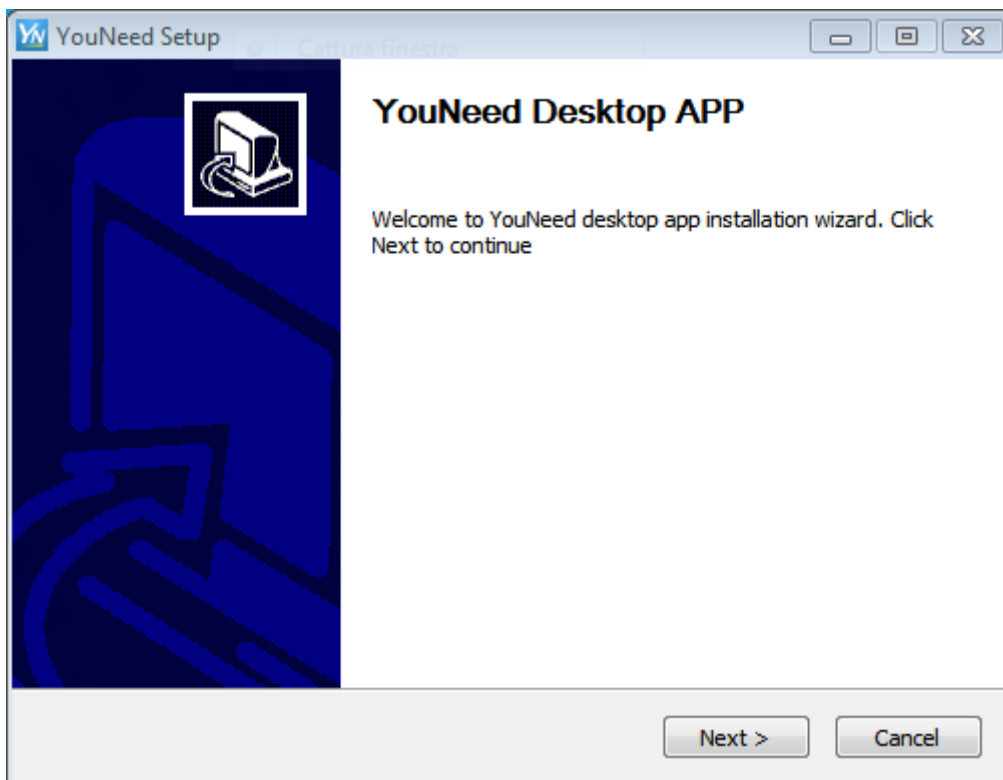
Sistemi supportati: Windows 7, Windows 8, Windows 8.1, Windows 10

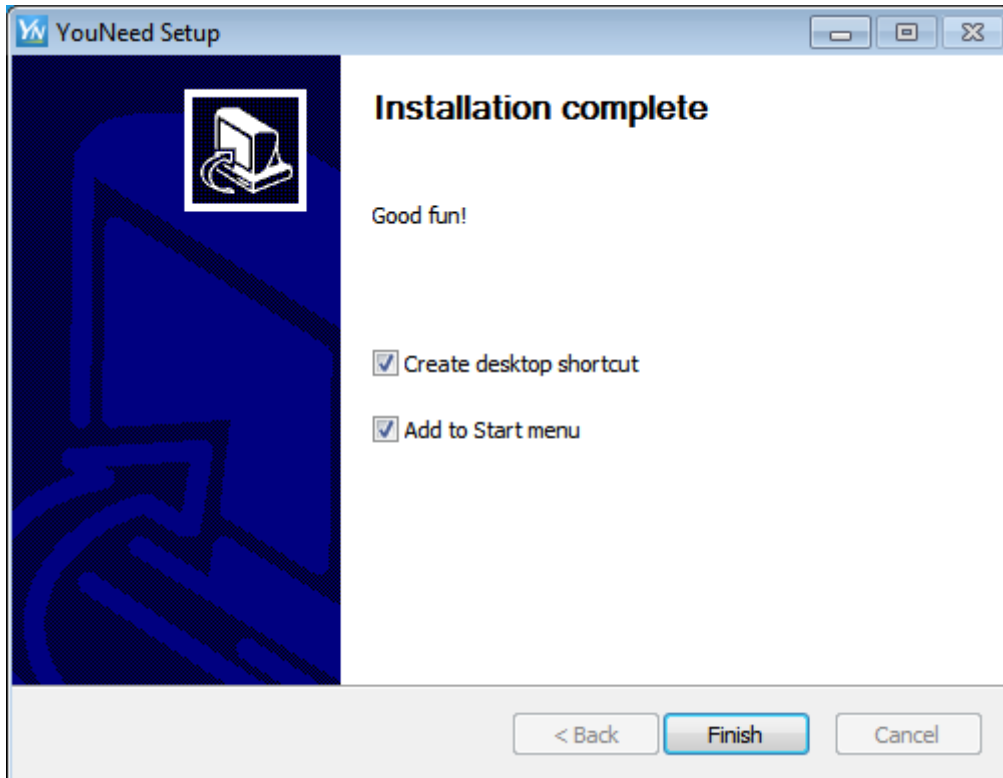
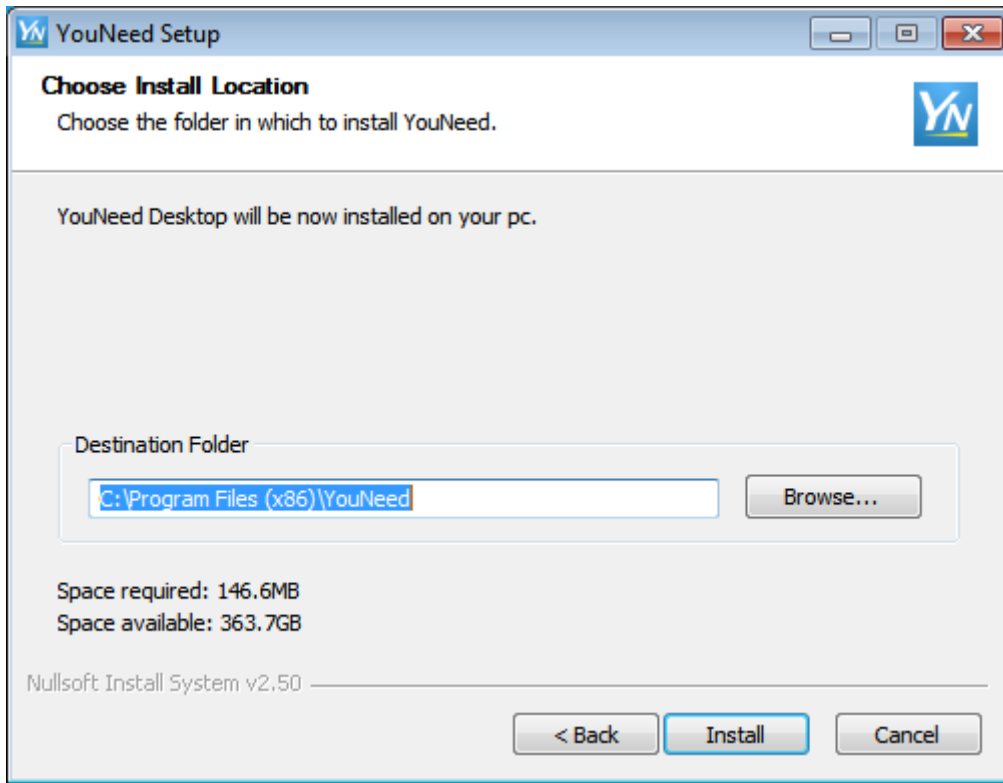
1. Scarica l'installer giusto per il tuo computer dall'Ambrogio Store

<https://www.ambrogio.com/store>

2. Procedi con l'installazione come di consueto

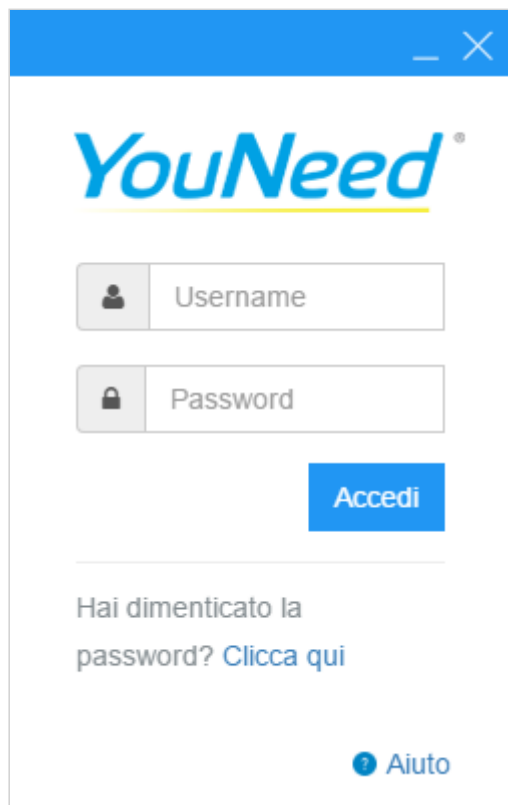
Attenzione! Occorrono i permessi da Amministratore





### 3. Sei pronto ad usare Youneed Desktop!

Apri Youneed Desktop ed effettua il login con le tue credenziali Youneed



The image shows a screenshot of a web browser window displaying the YouNeed Desktop login interface. The window has a blue title bar with standard minimize and close buttons. The main content area features the 'YouNeed' logo at the top, followed by two input fields: 'Username' with a person icon and 'Password' with a lock icon. A blue 'Accedi' button is positioned to the right of the password field. Below the input fields, there is a link that reads 'Hai dimenticato la password? [Clicca qui](#)'. At the bottom right, there is a link for 'Aiuto' with a question mark icon.